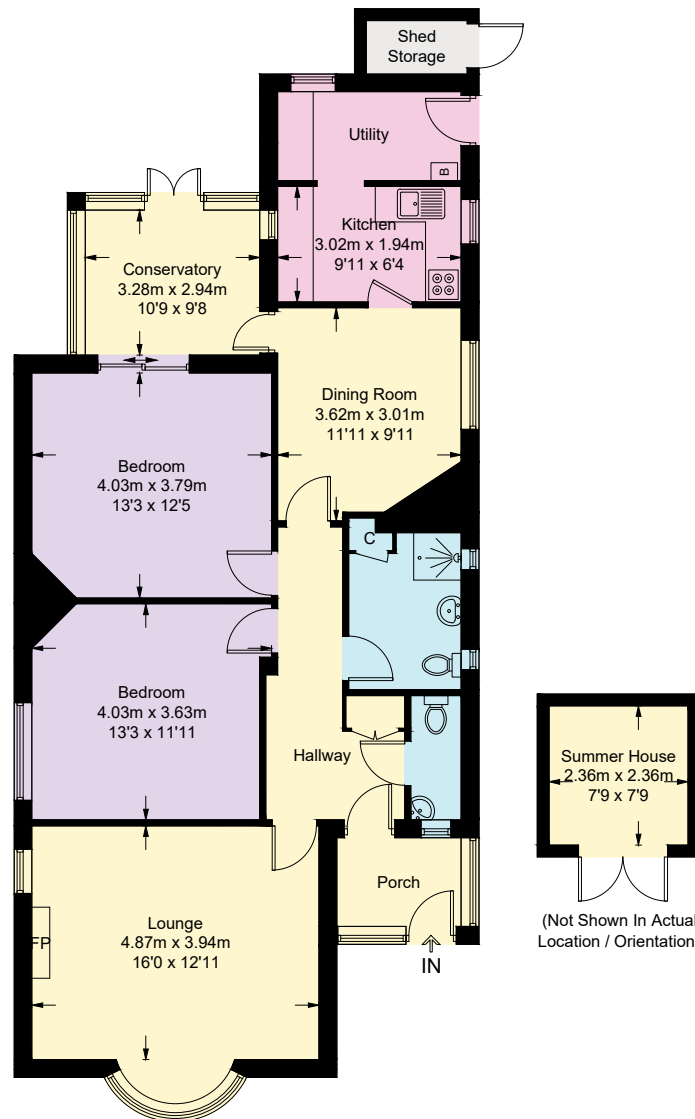


# 7 St. Davids Road, Penrhyn Bay, LL30 3EL

Approximate Gross Internal Area = 103.9 sq m / 1118 sq ft

Summer House / Shed Storage = 7.0 sq m / 75 sq ft

Total = 110.9 sq m / 1193 sq ft



This plan is for layout guidance only. Not drawn to scale unless stated. Windows and door openings are approximate. Whilst every care is taken in the preparation of this plan, please check all dimensions, shapes and compass bearings before making any decisions reliant upon them.

Fourlabs.co © (ID1228416)